

BILL OF BARS

304# COATED

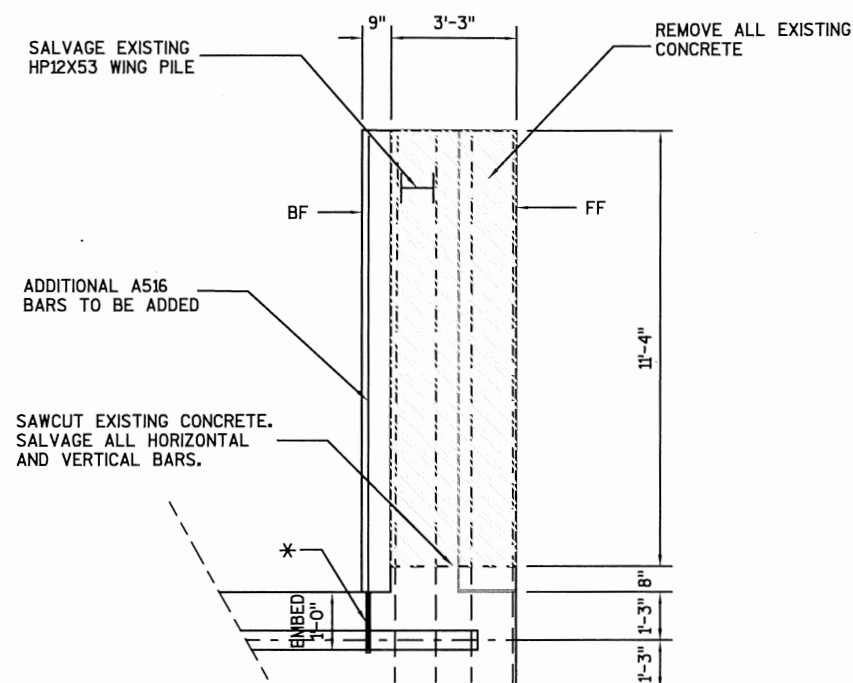
BAR MARK	COAT	NO. REQUIRED	LENGTH	BENT	BAR SERIES	LOCATION
A515	X	12	16'-9"	X		ADDITIONAL WING WALL - VERT
* A516	X	7	12'-10"			ADDITIONAL WING WALL - HORZ

NOTE: BAR DIMENSIONS ARE OUT TO OUT OF BAR. THE FIRST DIGIT OF A THREE-DIGIT BAR MARK OR THE FIRST TWO DIGITS OF A FOUR-DIGIT BAR MARK SIGNIFIES THE BAR SIZE.

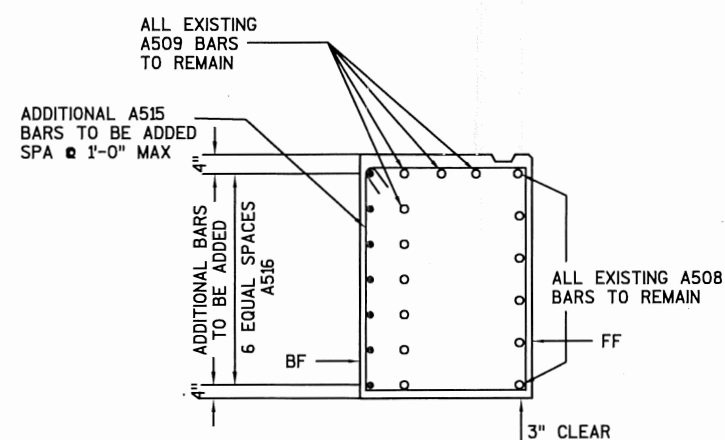
* ADHESIVE ANCHORS NO. 5. EMBED 1'-0" INTO EXISTING CONCRETE ABUTMENT.

GENERAL NOTES

THIS SHEET MODIFIES WING 2 OF THE WEST ABUTMENT ONLY.
ALL OTHER REINFORCEMENT IS TO FOLLOW THE ORIGINAL PLANS.

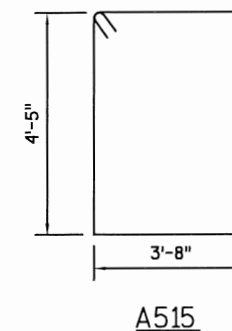


WING 2 PLAN



BF = BACK FACE
FF = FRONT FACE

TYPICAL SECTION THRU WING 2



A515

WEST ABUTMENT



6/26/18



NO.	DATE	REVISION	BY
ORIGINAL PLANS PREPARED BY			
Cedar corporation MENOMONIE - MADISON - GREEN BAY www.cedarcorp.com 800-472-7372			
STATE OF WISCONSIN DEPARTMENT OF TRANSPORTATION			
STRUCTURE B-22-286			
DRAWN BY ATA		PLANS CKD. TLP	
WING 2 MODIFICATION			SHEET 1 OF 1